

THE VIEW-APPLICATIONS:

Introduction	page 2
Screen configuration	page 4
License key	page 5
How to create a group	page 5
How to delete a group	page 7
How to start a group	page 6
How to create an application	page 6
How to delete an application	page 11
How to change an application	page 12
How to add an option into a view type of program	page 12
The search function	page 15
The area options	page 16
Interfaces	page 17
Tutorials	page 18

INTRODUCTION:

These type of applications provides you an alternative way to handle your screen information.

The information is displayed into separate areas depending on the type of view. In total there are 7 different views you can use. Depending on the type of view you can go from 1 area up to 4 separate areas into one view.

On top of the screen you will have your menu bar, the menu bar contains all the applications (views or local applications) you have created into a certain group. A group is a collection of applications belonging to a common topic. To create a group you use command [CRTGROUP](#) (group name). Once you have created the group, you can start the group with command [STRGROUP](#) (group name). The first application into the menu bar of your group is always application "[Group settings](#)". This application is automatically created by command [CRTGROUP](#). This application shall contain information about all other application(s) into the menu bar/group. Inhere you can add, change, delete or display information about the applications or the options within, depending on the type of view.

A dropdown menu containing all the options will be displayed when right click on a certain item, you select the options by left click into the dropdown menu.

Go from left to right thru your menu bar by clicking on [<<< MORE <<<](#) or [>>> MORE >>>](#) and select the application you are interested in by a left click on the application name. These two options shall only appear when more then 5 applications have been created into a group !

Underneath every area into an application there will be a white bar. If the characters "<" and ">" are displayed you can display more information by left click on the white bar.

On top of the screen, depending on the type of view, you will have the text "[CHANGE VIEW](#)" displayed. Left click on the text the go from VIEW3 -> VIEW4 -> VIEW5 -> VIEW6 and back to VIEW3.

On top of the screen, depending on the type of view, you will have the text "[AREA1](#)", "[AREA2](#)", "[AREA3](#)" or "[AREA4](#)" displayed. This is the area you are currently working in. If you want to work into a different area, left click into concerned area until the text change into the area name you are interested in.

For every type of view there is a [search function](#) "[SEARCH FOR AN ITEM](#)" foreseen. You first select the area you want to work in and then you activate the search function by left click on the text "[SERACH FOR AN ITEM](#)". Enter the search string, select text field ([NEXT](#)) to search forwards or ([PREVIOUS](#)) to search backwards. To return to the view and exit the search function just double click on any item into an area.

If you want to [create a view application](#) , left click on the text "[NEW](#)". Inhere, depending on the type of view, you have to name the application, specify the type of view, specify the file(s) you want to use into the application and the source library for the program. After all the parameters have been validated, a source generator will create an RPGLE communication program used to handle the requested information. After the [CRTBNDRPG](#) command you will find your application at the end of the menu bar. For every area into the application there will be automatically foreseen an add-option, a display-option, a delete-option and an update-option. If you want to add a local application to the group, fill the name of your local application into parameter field "Your program:" and press ENTER. Take into account a small interface as described into chapter [interfaces](#).

Watch our tutorial on YOUTUBE <https://www.youtube.com/watch?v=2pPy4gJlo6I>

Below an example of a view type-3 application:

Group name Shift left Menu bar Change view Current App Shift right Find Create app Exit

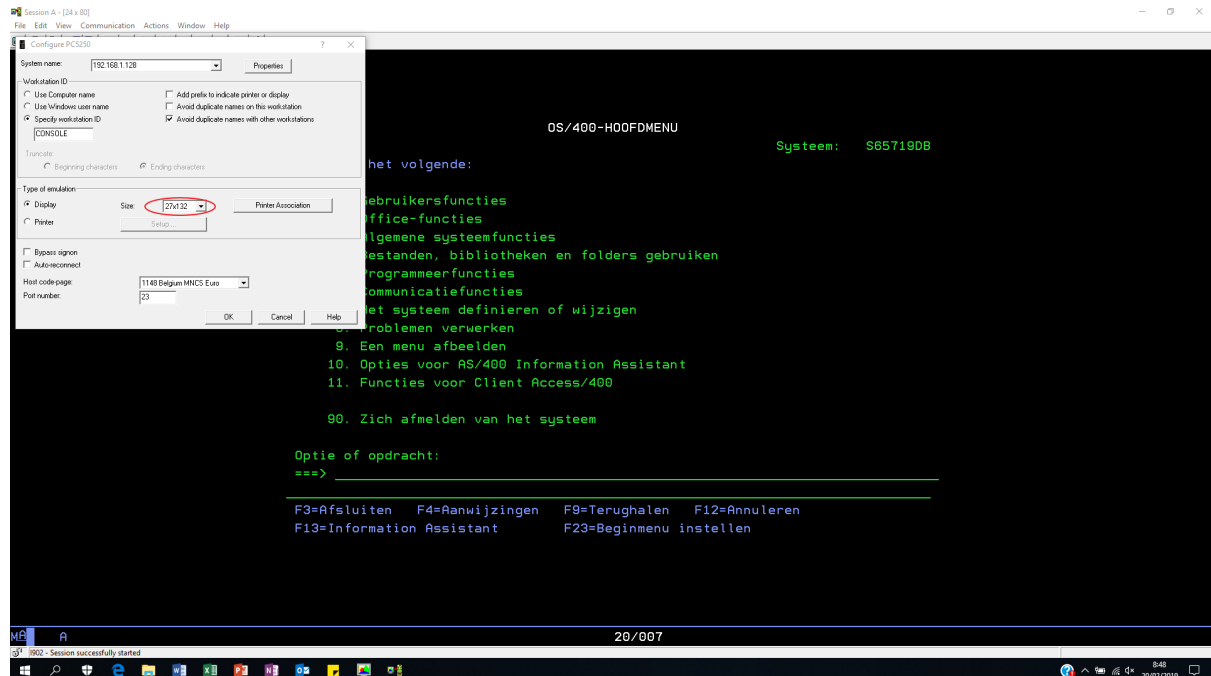
Area1 White bar Area1 Area2 White bar Area2 Area3 White bar Area3

The example above is showing you a view type-3 application. This application contains 3 areas, the data within the areas are connected. In this example we have city information displayed into area1, related industries into area2 and finance information into area3. By selecting an item into area1 (New York) we will have the related industries into area2. By selecting an item into area2 (Finance) we will have all financial institutes from New York into area3. To connect the 3 areas you have to make a small adjustment as indicated into the automatic generated RPGLE source.

SCREEN CONFIGURATION:

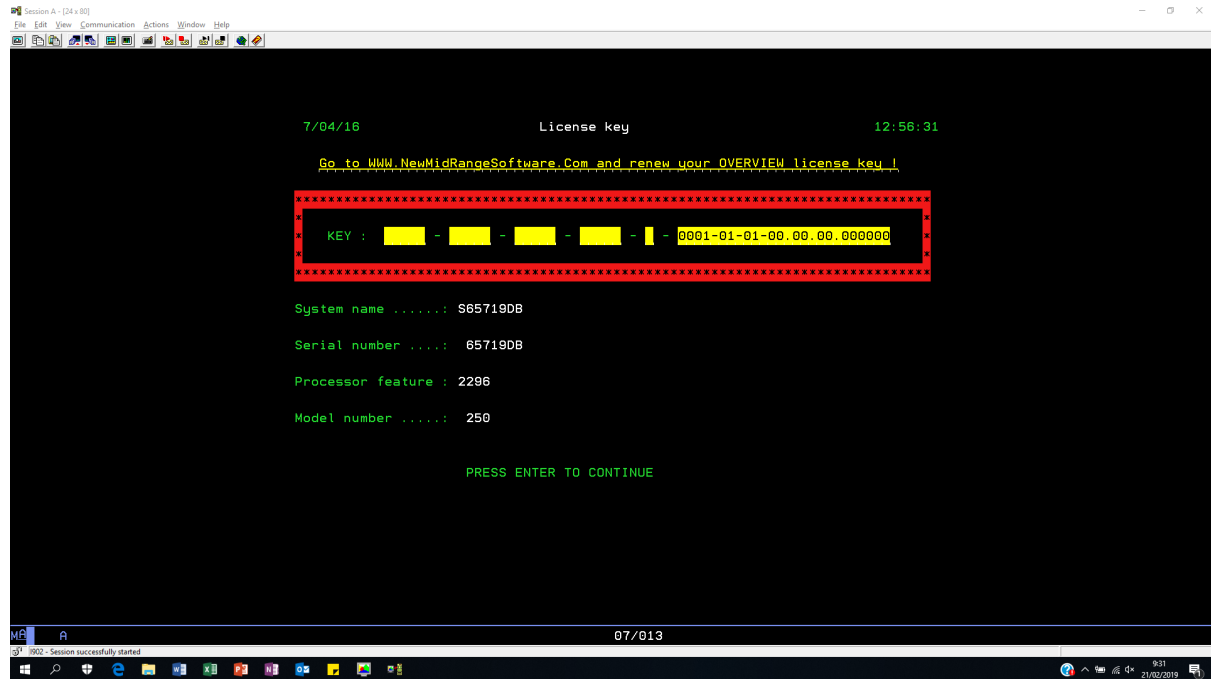
If you want to make use of these type of applications, you have to make sure your screen is configured under 27 X 132.

Go to Communication >> Configure... and select size 27 X 132



LICENSE KEY:

Before you can start building applications you must ask for a license key. You do this via webshop www.NewMidRangeSoftware.com. Select *products/view_applications* and ask a license key for a *one month free trial*, a *one year license renewal* or *buy* the product.



Once you have received your license key, you can start creating your applications.

Watch our tutorial on YOUTUBE ...

<https://www.youtube.com/watch?v=iv5qFuvh1Q4&feature=youtu.be>

HOW TO CREATE A GROUP:

A group is a collection of applications belonging to a common topic.

Use command **CRTGROUP**, name the group and press ENTER. While executing this command the “[Group setting](#)” application is automatically created together with the necessary options to maintain the applications.

Example: CRTGROUP GROUP (MY_GROUP)

HOW TO START A GROUP:

If you want to start a group or work with an application within a group:

Use command **STRGROUP**. When you start a group, you will always end up into the “[Group setting](#)” application.

Go to the application you are interested in by clicking on <<< MORE <<< or >>> MORE >>> (if present) into the menu bar and select the application you want by a left click on the application name.

Example: STRGROUP GROUP (MY_GROUP)



At first the application is empty, next you have to start creating applications.

HOW TO DELETE A GROUP:

If you want to delete a group together with all related applications:

Use command **DLTGROUP**.

Example: DLTGROUP GROUP (MY_GROUP)

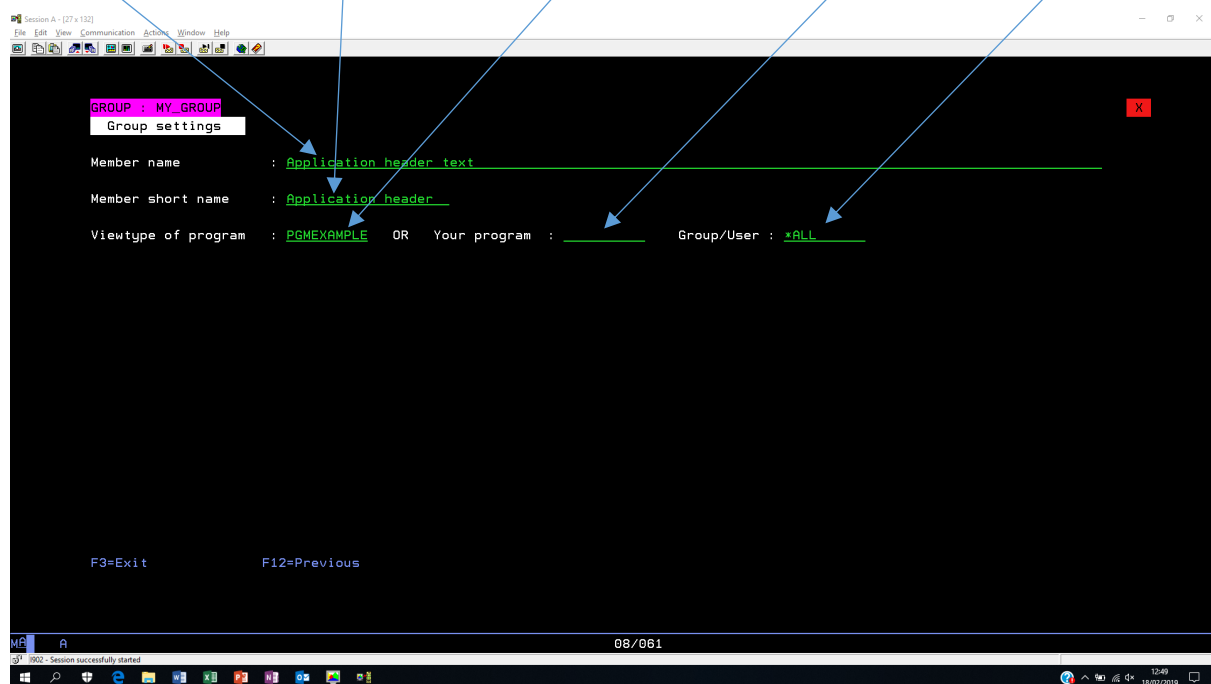
HOW TO CREATE AN APPLICATION:

If you want to create an application click on the text **NEW** on top of the screen and start creating your application. The following is an example of the creation of a view type-4 program

(See [picture 5](#)).

STEP_1: Application header information.

Application name Short name View type program Local program name Availability



Member name: Long description about the application you are about to create.

Member short name: Short description about the application you are about to create. This text will be found in the menu bar on top of the screen.

Viewtype of program: If you want to create a view type of program you must specify here the name of the program you want to create.

Your program: Enter the name of a local program. (See chapter [interfaces](#))

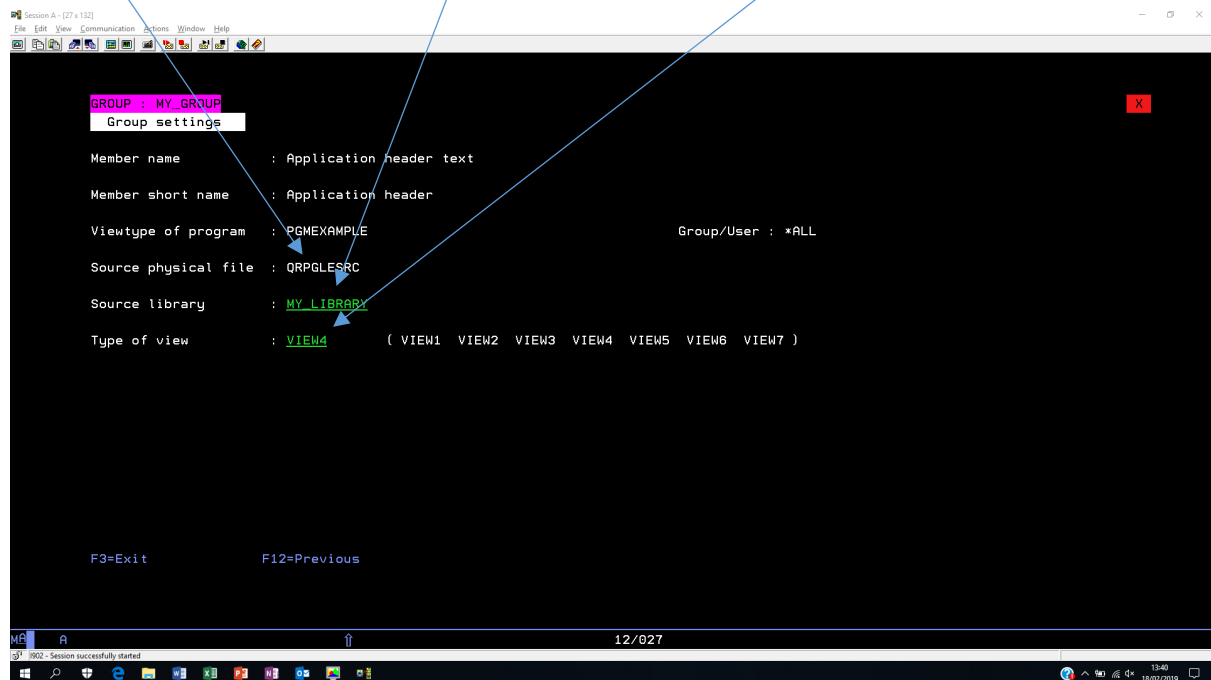
Availability: Enter the name of a group profile or user profile and the application will be available for concerned user(s). Enter the text *ALL and the application will be available for all users.

STEP_2: Program information.

Source physical file

Library

Type of view



Source physical file: Is by default QRPGLESRC and cannot be changed.

Source library: Enter the name of the library containing the file QRPGLESRC.

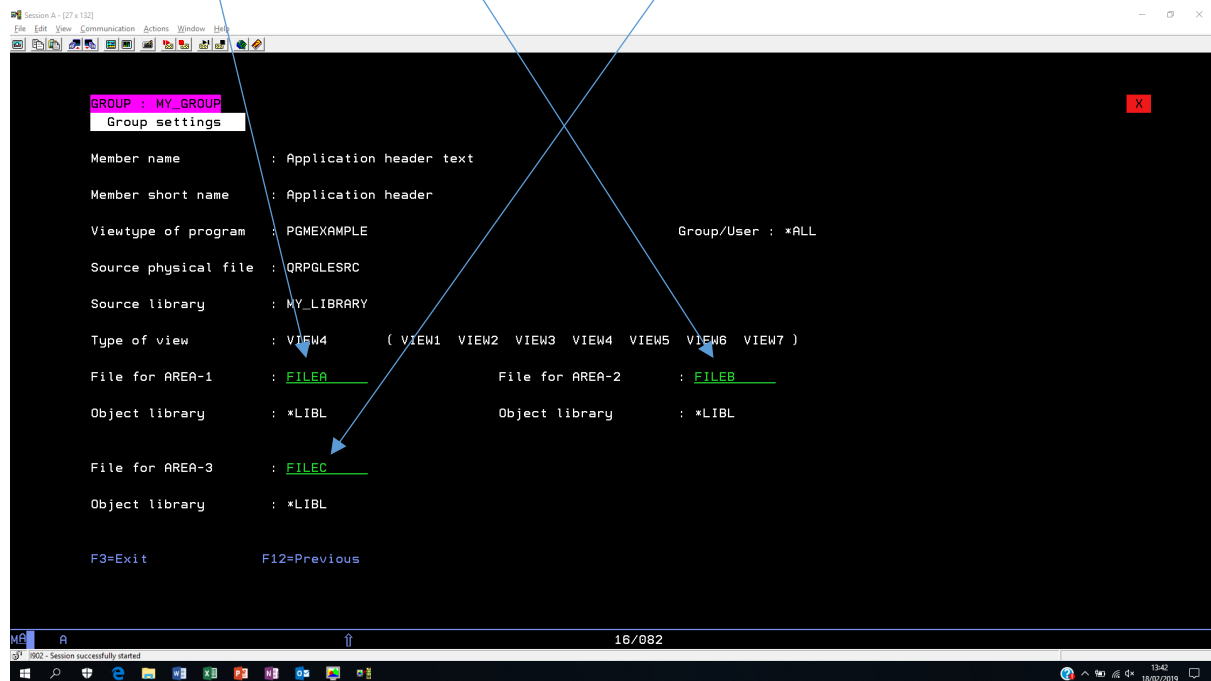
Type of view: Enter the type-of-view program you want to create (VIEW1, VIEW2, VIEW3, VIEW4, VIEW5, VIEW6 or VIEW7)

STEP_3: File information.

Name of the file to be handled into area1 of the application

Name of the file to be handled into area2 of the application

Name of the file to be handled into area3 of the application



File for area1: Enter the name of the file you want to handle into area1.

File for area2: Enter the name of the file you want to handle into area2.

File for area3: Enter the name of the file you want to handle into area3.

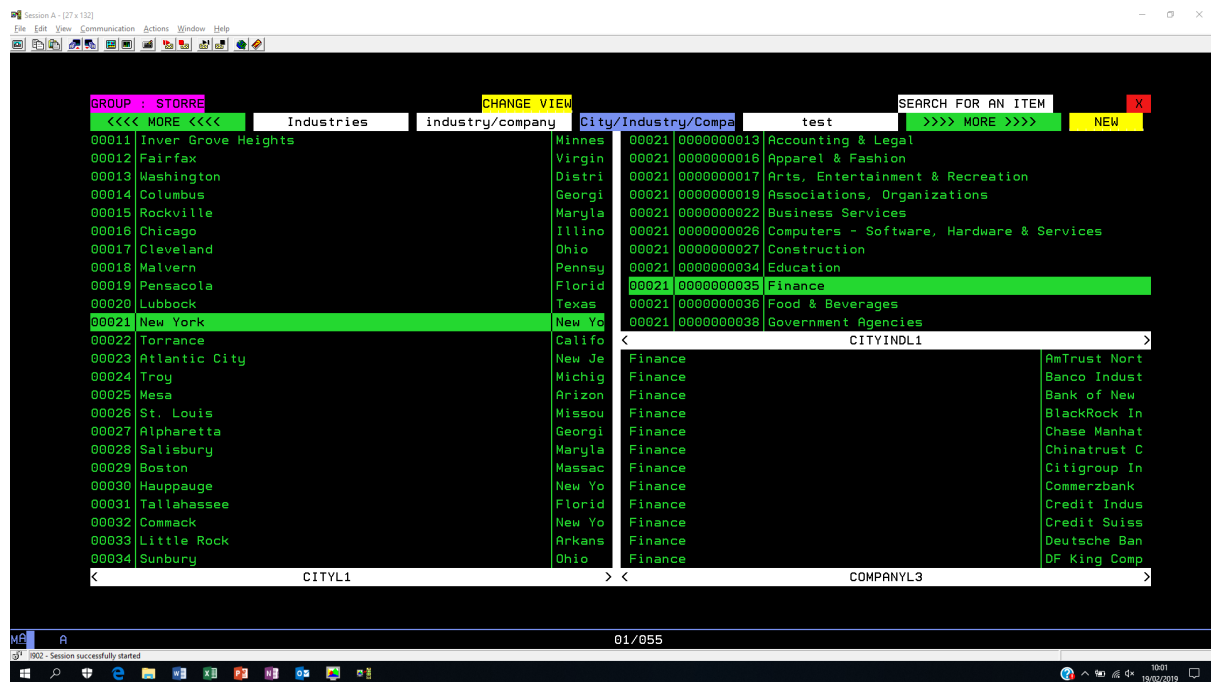
Object library: Is by default *LIBL and cannot be changed.

Press ENTER. After pressing the ENTER-key, the application shall generate you and RPGLE program (*Viewtype of program*) into the library specified (*Source library*) based upon the file information (*File for area1, File for area2 and File for area3*).

Remark: All files must exist, cannot contain multiple members and must be keyed.

Do CRTBNDRPG and the application (*Member short name*) shall appear at the end of the menu bar.

Below an example view type-4 application:

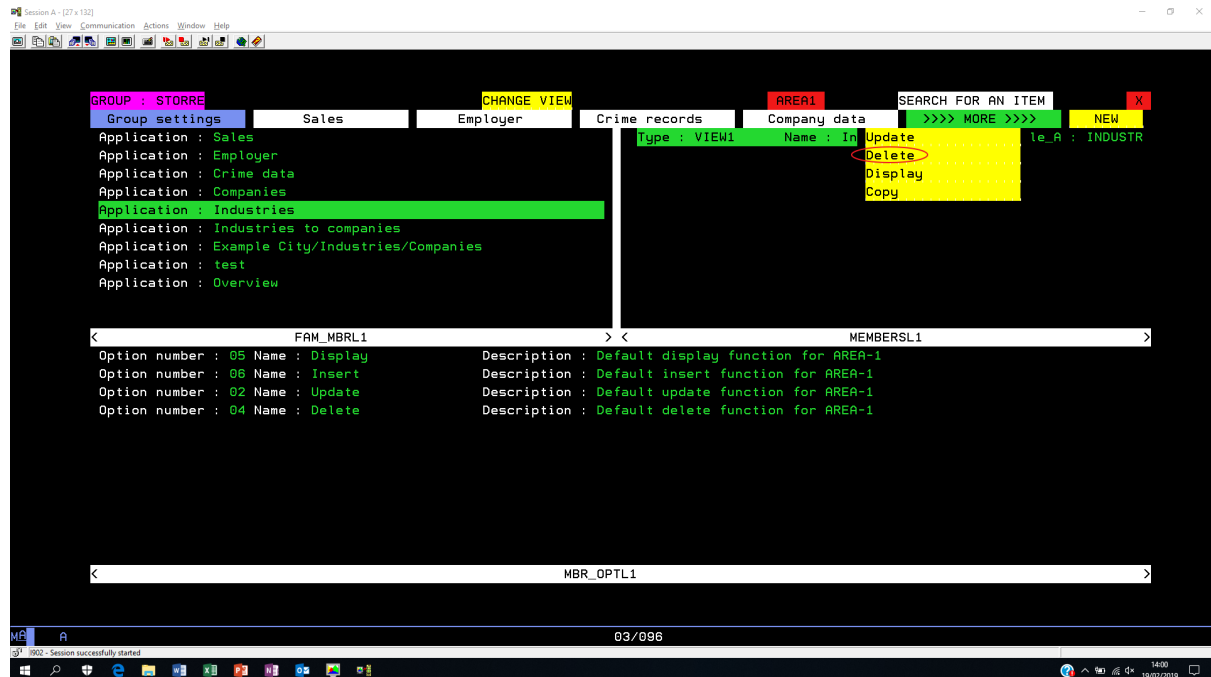


HOW TO DELETE AN APPLICATION:

If you want to delete an application, you must go to the *Group settings* application into your menu bar. You then select the application you want to delete by a click into area1. Then right click into area 2 and select option delete into the drop down box.

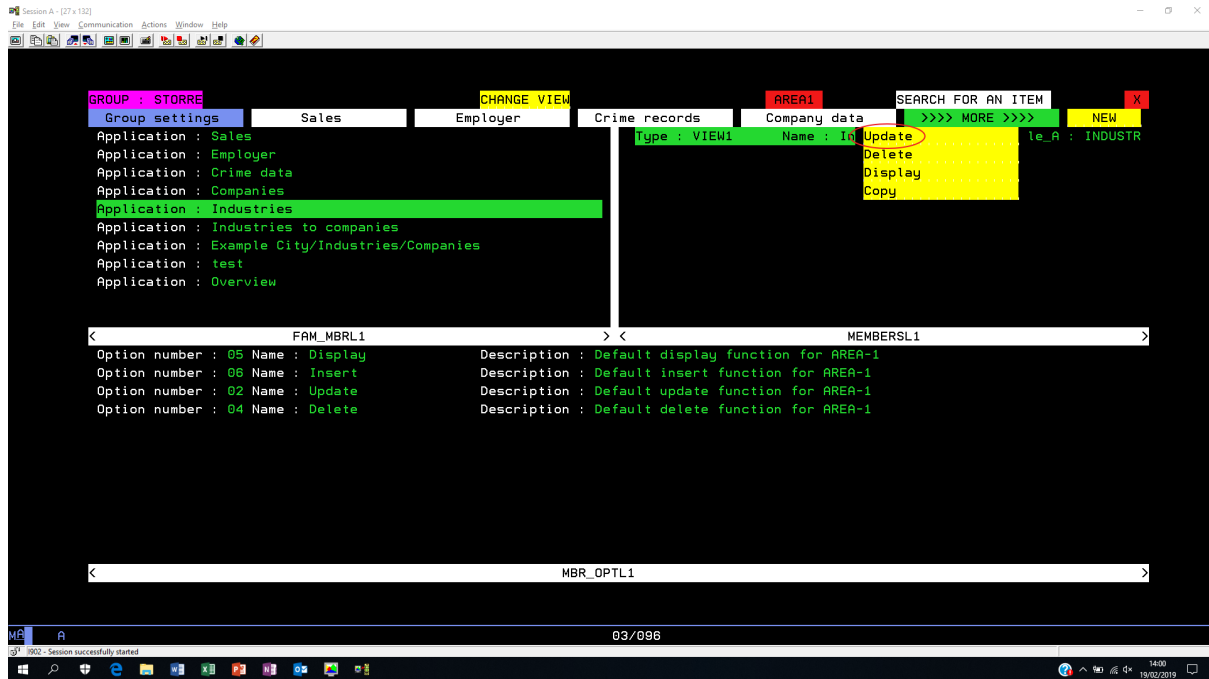
The delete function shall remove the application 'Industries' together with the area options.

Picture 6

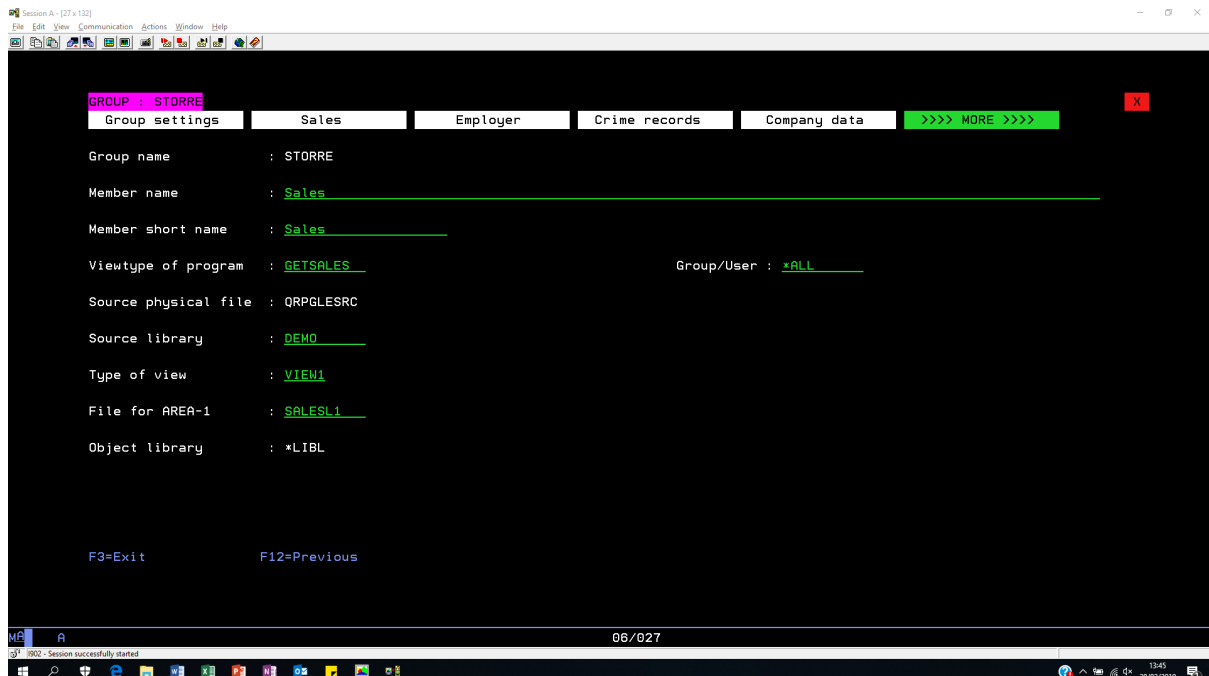


HOW TO CHANGE AN APPLICATION:

If you want to change an application, you must go to the *Group settings* application into your menu bar. You then select the application you want to change by a click into area1. Then right click into area 2 and select option update into the drop down box.

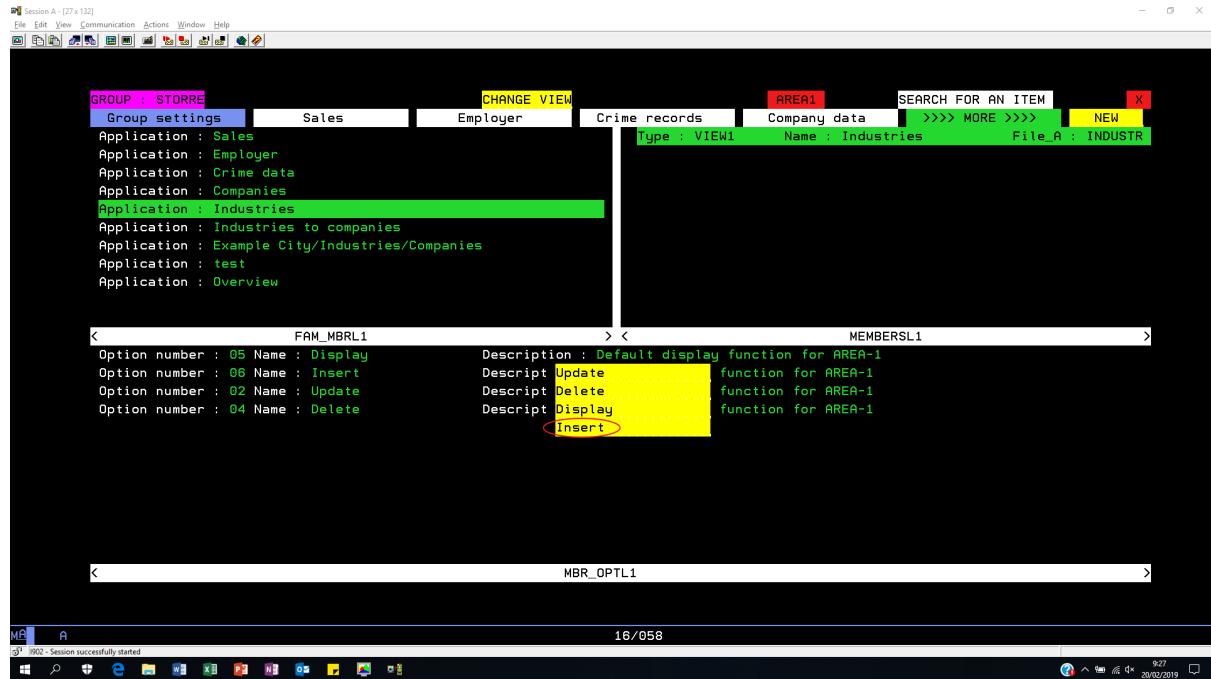


Next screen shall appear ...



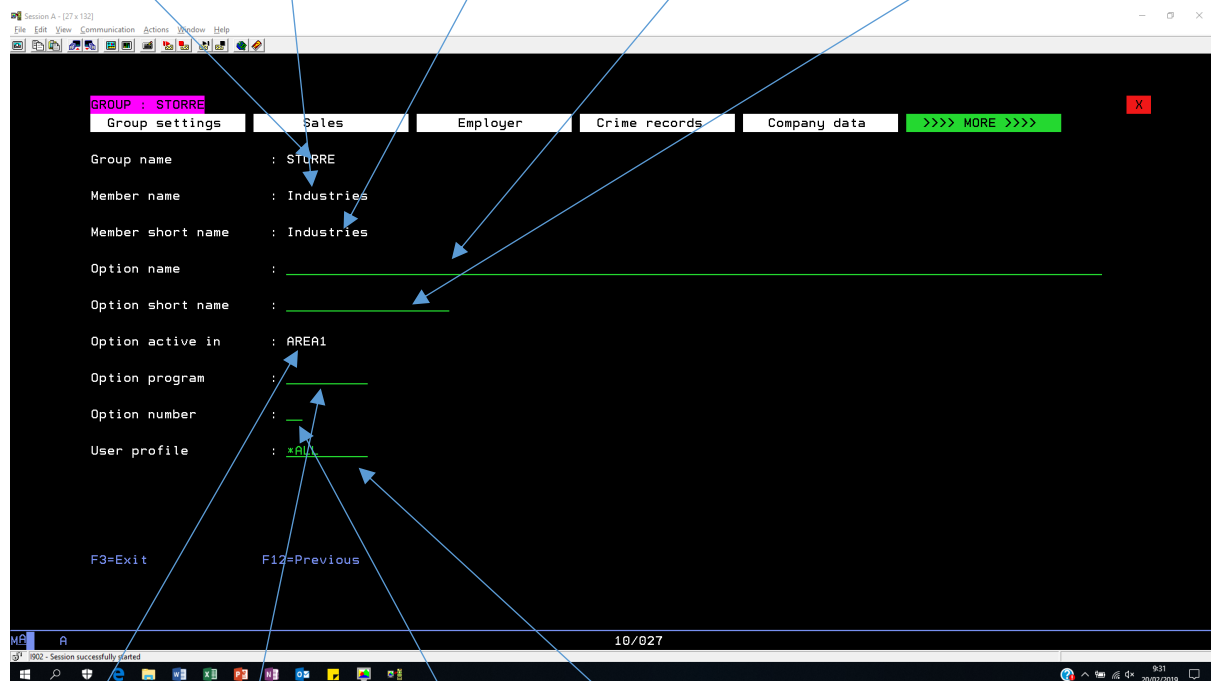
HOW TO ADD AN OPTION INTO A VIEWTYPE OF PROGRAM:

If you want to add, delete, change or display an option from view applications, you must go to the *Group settings* application into your menu bar. You then select the application you want to change by a click into area1. Then right click into area3 and select option *Insert* into the drop down box.



Next screen shall appear ...

Group name Application name Short name Option description Option short description



Area name Program name Program option Availability

Group name: Name of the group to which the applications belong.

Member name: Long description from the application.

Member short name: Short description from the application. This text will be found in the menu bar on top of the screen.

Option name: Long description of the option you are about to create.

Option short name: Short description of the option you area about to create. This text will be found into the drop down box.

Option active in: Enter the name of the area (AREA1, AREA2 ...) where the option should appear. Depending on the view type of application.

Option program: This is the name of the program behind the option.

Option number: This is the alfa value to be passed to the program specified into field *Option program*. (See chapter interfaces)

Availability: Enter the name of a group profile or user profile and the application will be available for concerned user(s). Enter the text *ALL and the application will be available for all users.

The search function:

Every view application is automatically foreseen from a search function.

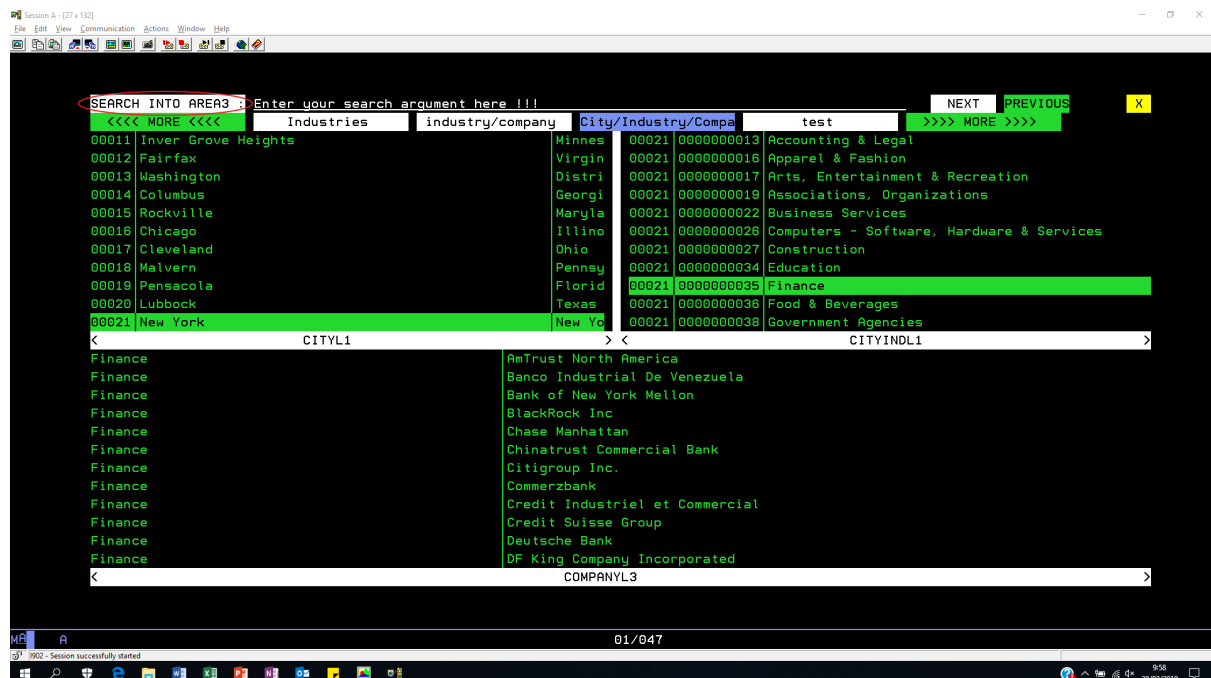
For multiple area applications you first mark the area you want to search in by clicking into the area itself until the text **AREAx** on top of the screen displays the area you are interested in.

Next click on the text **SEARCH FOR AN ITEM** and the application will take you into the search function. On top you put the find string and press **NEXT** to search forward or **PREVIOUS** to search backward.

Once you have found what you are looking for just double click on any item into an area and you will return to original application.

Picture 9

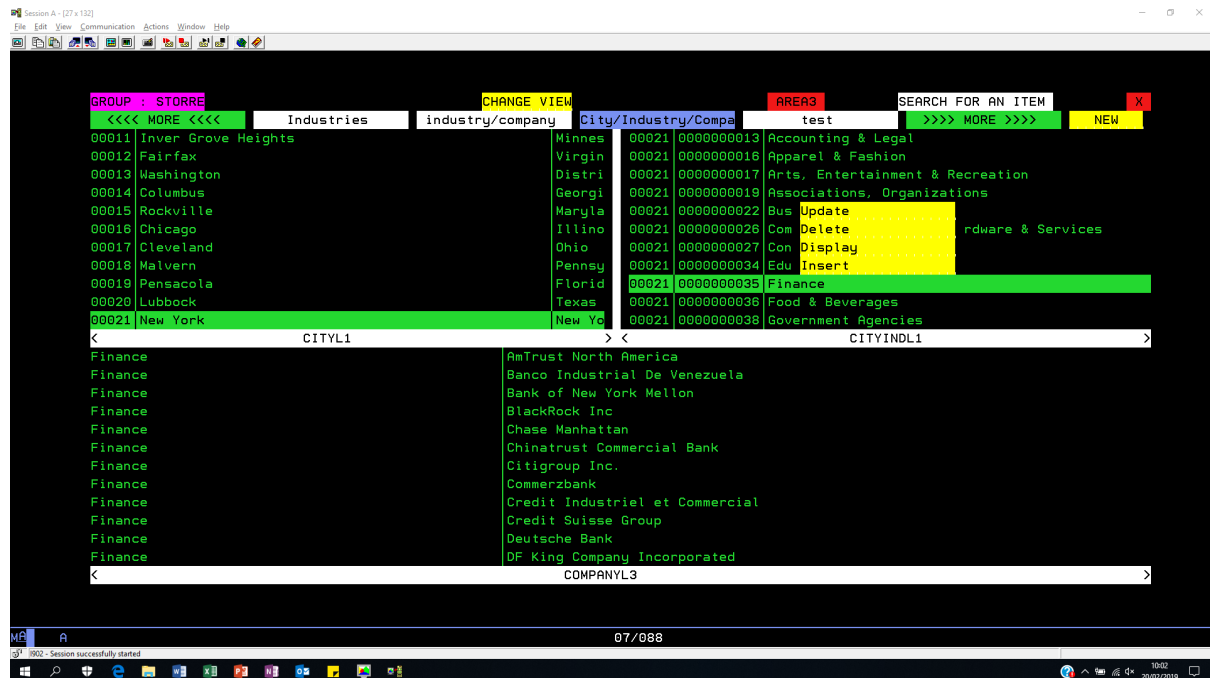
Below and example of a search into area3:



The area options:

Every application is automatically foreseen from 4 area options (Display, Insert, Update and Delete). Right click on an item and a drop down menu will be displayed containing the options. Select an option and the application shall display, add, change or delete the concerned record.

Below and example of a view-3 type of program with area options for area2:



Interfaces:

If you want to add a local program to the menu bar, you need to take into account only one parameter. This concerns a return parameter.

Description	Length	Type	Value
Return parameter	2	Alfa	'03' -> Exit application '12' -> Previous point of entry

If you want to add an option into one of the view applications, you must take into account 3 parameters.

Description	Length	Type	Value
Program option	2	Alfa	Value from <i>Option number</i>
Relative record number	9	Binary	Rrn from record
Return parameter	2	Alfa	'03' -> Exit application '12' -> Previous point of entry

TUTORIALS :

Introduction of the view applications on YOUTUBE

<https://www.youtube.com/watch?v=2pPy4gJlo6I>

Download and installation of the view applications on YOUTUBE

<https://www.youtube.com/watch?v=iv5qFuvh1Q4&feature=youtu.be>

How to create a view type 1 application on YOUTUBE

<https://www.youtube.com/watch?v=5xkVezakA-Y&feature=youtu.be>

How to create a view type 2 application on YOUTUBE

<https://www.youtube.com/watch?v=IhtBxJrWb5I&feature=youtu.be>

How to create a view type 3, 4, 5 and 6 application on YOUTUBE

https://www.youtube.com/watch?v=AFj_5AxP2z8&feature=youtu.be

How to create a view type 7 application on YOUTUBE

https://www.youtube.com/watch?v=pl7o-28j0_o&feature=youtu.be

How to plugin your local applications on YOUTUBE

<https://www.youtube.com/watch?v=F3JA4wI9GXQ&feature=youtu.be>